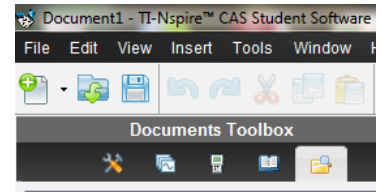


Upgrade/Load the OS on the TI-Nspire™ CX Handheld

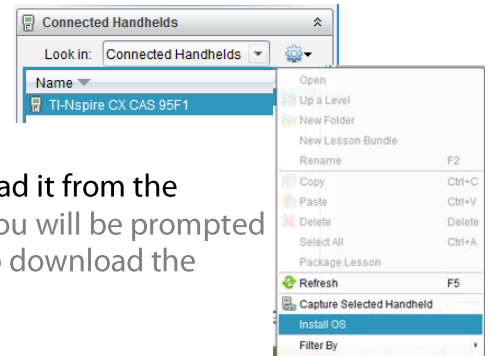
Step 1:


- Connect the TI-Nspire handheld to the computer and launch the TI-Nspire software. Select the “Content Explorer” tab, located under the Documents Toolbox.



Step 2:

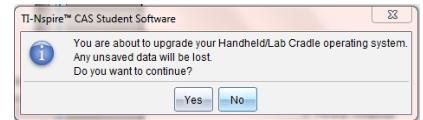
- Under Connected Handhelds, click on the handheld to highlight. Then click on the pull down menu next to the “cog” image and select **Install OS**.



Locate the operating system on your computer or download it from the website: <http://education.ti.com/aus-nz/softwareupdate> (*You will be prompted to select your calculator and software before being able to download the handheld OS.  [Download TI-Nspire CX CAS Handheld OS v4.0](#))

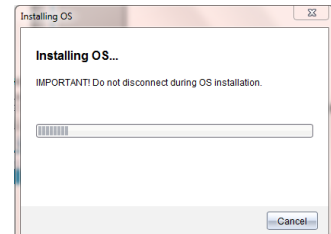
Step 3:

- A warning message is displayed, “You are about to upgrade your...” click Yes.



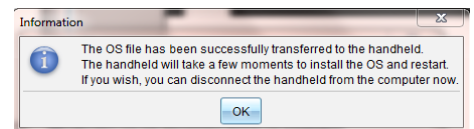
Step 4:

- The progress of the update is monitored.
Do not disconnect the handheld during the upgrade process.



Step 5:

- When the OS has been successfully transferred onto the calculator you will see this message. Click OK.



Step 6:

- Once the calculator restarts, complete the prompts to personalise your settings.

